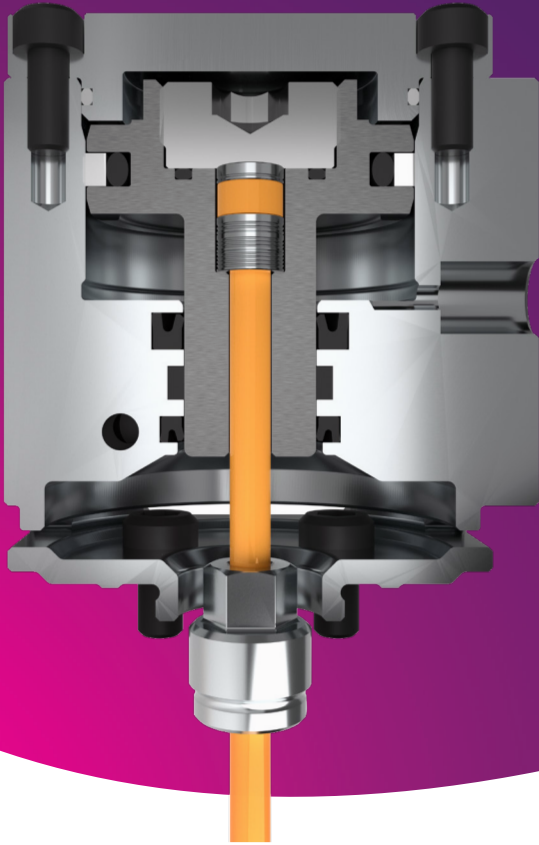


# Cylix™ Hybrid Valve Gate Technology

**mastip**™  
hot runner solutions



**The Cylix™ Hybrid Valve Gate (HVB40) Actuator features Pneumatic or Hydraulic Valve Gate actuation in a thermally controlled system mounted directly to the manifold.**

With the ability to adjust valve pin height and incorporating long life seals, it is the optimal solution for precise control of your moulding requirements.

## Applications

- Ideal for small to medium automotive, medium to large appliances and large part electrical applications
- Suitable for high pressure applications
- Able to process both commodity and abrasive engineering grade polymers with fillers like glass fibre, carbon fibre or talc.

## Features

- Pneumatic or Hydraulic actuation
- Conical or Cylindrical Shutoff
- Ø2.0mm, Ø2.5mm, Ø3.0mm and Ø5.0mm Pin sizes
- High Temperature Valve Cylinders, hose and fittings
- Cylix™ Valve Cylinders mount directly to the manifold system

## Operation

- HVB40 is available to suit MX, BX & TX nozzles
- Thermally controlled cylinders
- Includes a Headed Pin design, with ability to incrementally adjust pin height via valve pin adjustment packers

## Installation and Maintenance

User-friendly maintenance and easy serviceability

# Cylix™ Hybrid Valve Gate Technology

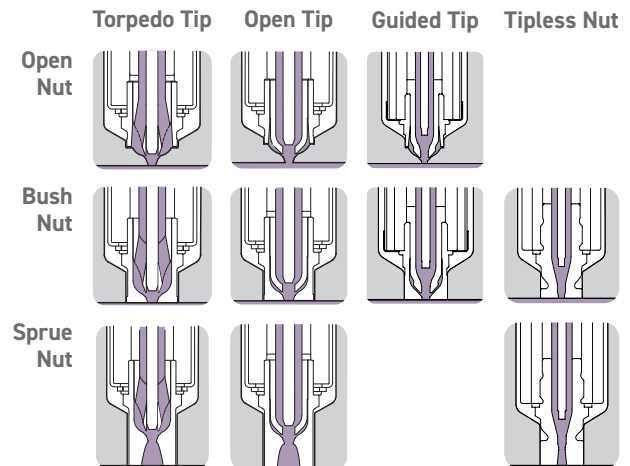


## Valve Gate Assembly

	13 Series *	16 Series	19 Series *	27 Series
	MX/BX	MX/BX/TX	MX/BX/TX	BX/TX
Description	HVB40-P1 Headed Pin			
Actuation Type	Pneumatic/Hydraulic			
Pin Size	Ø2.0	Ø2.5	Ø3.0	Ø5.0
Stroke	10			

\* 13 Series available in open nut and open tip only  
All measurements are in millimetres

## Gating Options



## Plate Details Example

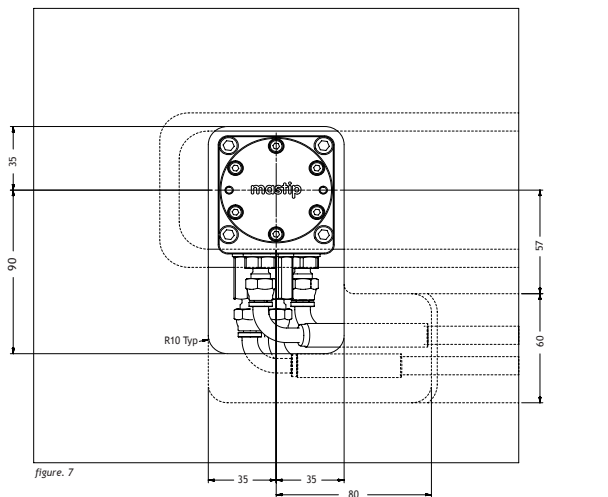


figure. 7

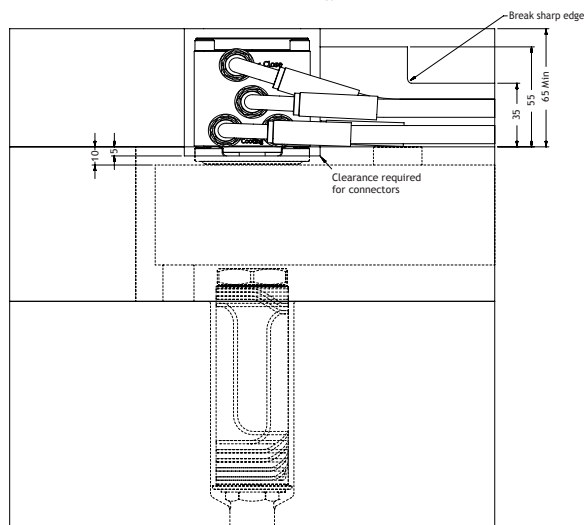


figure. 8

## Availability

	13 Series		16 Series			19 Series			27 Series		
	MX	BX	MX	BX	TX	MX	BX	TX	BX	TX	
L	45				—		45		—		
	55				—		55		—		
	65				—		65		—		
	75										
	—	85	—	85		—	85		85		
	95										
	—	105	—	105		—	105		105		
	115										
	130										
	145										
	—	160	—	160		—	160		160		
	175										
	—	200	—	200		—	200				
	—	225	—	225		—	225				
	—			250		—	250				
	—						275				
	—						300				
	—								350		
	—								400		
	—								450		
A/F	24	31	26	34	27	36	36	30	45	36	
d2	28	34	30	38	—	40	40	—	50	—	
L4	12				—	15	15	—	20	—	